



ALTAI  
STATE  
UNIVERSITY

**Impacting the Global Goals by  
DEGREEs – 2020**



# KEY FACTS ABOUT ALTAI STATE UNIVERSITY



- **500+** summer schools participants
- **50+** winners and awardees of All-Russian Student Olympiads
- **1800+** open access video lectures
- **40+** scientific journals
- **TOP-10** in best Russian e-libraries (Webometrics)
- **9** academic buildings
- **5** dormitories
- **80+ha** of academic buildings and dormitories
- **60+** trees in university area
- **8300+** students
- **1500+** foreign students
- **3000+** distant learning students
- **2000+** students live in dormitories
- **550+** lecturers



# THE GLOBAL GOALS AT ALTAI STATE UNIVERSITY



## ALTAI STATE UNIVERSITY SUSTAINABLE DEVELOPMENT MISSION

Located in the "heart" of Siberia, Altai State University is one of the leading universities, striving for international excellence, world-changing research and high-quality, inspiring teaching.

We support the national, gender, and racial equality among our staff and students, we respect various religions; we strive to increase our participation in higher education and join the consortia and research networks with leading world universities; we cooperate with local, national and international communities on development and equality issues. All of this is part of what we do and who we are.

We have made a commitment to contribute to the UN's Sustainable Development Goals by incorporating them into our social responsibility strategy. We contribute to the UN's Sustainable Development Goals every year, step by step, through training programs, events and research aimed at achieving sustainable development in the world, Russian Federation, Altai Krai and Altai State University.

## THE UNIVERSITY IMPACT RANKINGS

Altai State University was 95th in THE University Impact Rankings, in 2020. AltSU was included in the TOP 100 world universities by 13 SDGs. The methodology of THE University Impact Rankings is based on three areas: research - creating the knowledge to solve the most challenging world problems; socially-oriented programs - the direct university activity in the society; management - resource management, the university's contribution to education in the broad sense. The ranking used Elsevier data and relevant quantitative and qualitative parameters. Altai State University had the higher 2020 scores in SDG 8, SDG 16, and SDG 7.



95

Altai State  
University

📍 Russian  
Federation



84.0

📘 SDG Descriptions





# END POVERTY IN ALL ITS FORMS EVERYWHERE



## TEACHING



**15** modules in EPs  
**400+** students who could choose modules

## ENGAGEMENT EXAMPLE

AltSU implements extended education program "Fundamentals of financial literacy and financial education of rural population". A total of 82 teachers from the schools of Smolensk district of Altai Krai upgraded their skills under this program in 2020.

## INSTITUTION EXAMPLE

AltSU creates working conditions for students from low-income families. They can attend special study programs with flexible schedules, which allows these students to work without missing the classes.



## IMPACT EXAMPLE

Professor Svetlana Maksimova is actively involved in the poverty reduction program in Altai Kraiy. The low income register of the Altai krai includes 98,346 citizens, whose families have substandard incomes and have the official low income status. Meanwhile, more than 410 thousand people in the region are below the federal poverty line. Professor Maksimova joins municipal team to develop and implement the measures to help Altai Krai residents to overcome the difficult financial situation and increase their incomes.

**MapusPa**

**ЗАРАБАТЫВАЙ,  
НЕ ПРОПУСКАЯ ПАР!**

**ОТКРЫТА ВАКАНСИЯ  
"БАРИСТА"**

- ГИБКИЙ ГРАФИК
- ДОСТОЙНАЯ ЗП
- КАРЬЕРНЫЙ РОСТ
- БЕСПЛАТНОЕ ПИТАНИЕ
- ОБУЧЕНИЕ ЗА СЧЁТ КОМПАНИИ

КОЛИЧЕСТВО РАБОЧИХ ЧАСОВ ВЫБРАЕШЬ САМОСТОЯТЕЛЬНО!

**ОБРАЩАЙСЯ  
В ЛЮБОЙ МАГАЗИН ИЛИ  
ЗВОНИ ПО ТЕЛЕФОНУ  
8-800-77-55-999**



# END HUNGER, ACHIEVE FOOD SECURITY AND IMPROVED NUTRITION AND PROMOTE SUSTAINABLE AGRICULTURE



## IMPACT EXAMPLE

Mikhail Skaptsov, Senior Researcher of the South Siberian Botanical Garden of AltGU participated in the international project on sterility of transgenic agricultural plants.

The main goal of this research was to develop a system to switch off the genes responsible for plant fertility and to create the sterile plants, which will not hybridize with their wild relatives. The results of the work were published in Scientific Reports.



## TEACHING

**38** modules in EPs

**200+** students who could choose modules



## RESEARCH

**37** publications in Scopus in 2015-2019

**247** "cited by" in Scopus



## ENGAGEMENT EXAMPLE

AltSU started to test own biological products. The tasks of these tests were to determine in the labs the efficiency of microbiological preparations implemented to enhance seed quality, laboratory germination, germination energy, growth strength and vitality; to perform field study of the stimulating effect of microbiological preparations on the selected crops at different growth phases and to compare the efficiency of biological products with chemical analogues.

## INSTITUTION EXAMPLE

Since 2017, AltSU has been implementing a strategic project "Creation and launch of competitive domestic biological products and technologies for the agro-industrial complex on the basis of an innovative model of a complete scientific and technological cycle" (AgroBio Project). Its implementation address the issues related to food production and safety. In Altai State University, all researches related to the organization and management of modern agricultural land use with biologization, digitization, monitoring, evaluation and modeling were united under "Green Technologies" brand in 2020.

# ENSURE HEALTHY LIVES AND PROMOTE WELL-BEING FOR ALL AT ALL AGES

## TEACHING

**34** modules in EPs

**370+** students who could choose modules



## RESEARCH



**40** publications in Scopus 2015-2019

**111** "cited by" in Scopus

## INSTITUTION EXAMPLE

AltSU organized the II International Scientific and Practical Conference "Psychological, Pedagogical and Medical and Biological Problems of Human Health" on 22.04.2020.

Out of 101 participants 43 were from Bulgaria, Poland, Argentina, Belarus, Ukraine, Donetsk, Kazakhstan, Mongolia and China. All the participants agreed that public health protection can be possible only by consolidation of the world community, from state to private and public organizations and adopted this in conference resolution.

The participants concluded that It is necessary to educate the population with health saving behavior, to provide the population with healthy food, comfortable living and working conditions, physical training and sports, environmentally safe environment.

## IMPACT EXAMPLE

Researchers from the Russian-American Anti-Cancer Center (RAACC) are developing a unique technology of immunotherapy, based on the use of peptides, for cancer diseases. The research uses microchips that reveal the interaction of molecules and peptides - this is a unique story for Russia. According to Prof. Andrey Shapoval, the use of peptides in the future will be cheaper, they are smaller in size and will be able to penetrate more easily into tissues, while they are effective, as well as antibodies. Several peptides that specifically interact with inhibitory receptors CTLA-4 and PD-1 have already been identified.

## ENGAGEMENT EXAMPLE

AltSU participates in the All-Russian action of mutual assistance #МЫВМЕСТЕ, helping the single people during the Coronavirus epidemic. Student Alexey Dyachkov organizes the work in headquarter, which assists the elderly and weak health people with delivery of food and medicines. He succeeds in combining his distant learning in Altai State University with his volunteer work. He sometimes has to send answers to his teachers' tasks late in the evening, but he never misses the deadlines.





# ENSURE INCLUSIVE AND EQUITABLE QUALITY EDUCATION AND PROMOTE LIFELONG LEARNING OPPORTUNITIES FOR ALL



## INSTITUTION EXAMPLE

AltSU launched a large-scale educational project "Career++".

AltSU provides students with an opportunity to obtain the additional qualification or to conduct a new type of professional activity along with mastering the main professional educational program.

Participation in the project is a great chance to acquire a new actual personal, interpersonal, and professional competences necessary for successful self-realization in the professional field and career growth.

## IMPACT EXAMPLE

In 2020 AltSU opened a center for additional education "House of Scientific Collaboration named after Victor Vereshchagin" (DNK). In the DNK can be engaged 400 pupils of 5-11 grades, as well as school teachers who want to improve their skills. Training in DNK is carried out on general development programs of technical and scientific orientation, allowing to form the modern competences, primary skills of project management, teamwork using information resources.



## TEACHING



**127** modules in EPs

**5000+** students who could choose modules

## ENGAGEMENT EXAMPLE

Representatives of 15 countries took part in the IV International Educational Forum "Altai - Asia 2020: Eurasian Educational Space - New Challenges and Best Practices", which was held at Altai State University in 24-26.08.2020. It is one of the largest events in the Russian Federation, Central Asian countries and China in the fields of the global educational market, science and innovation, and cross-border international cooperation.

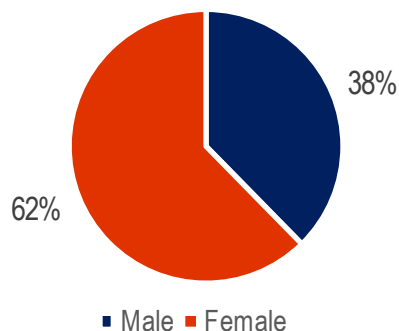




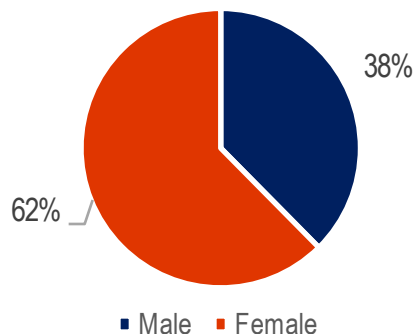
# ACHIEVE GENDER EQUALITY AND EMPOWER ALL WOMEN AND GIRLS



Gender ratio among faculty  
in 2020



Gender ratio among 1st year  
students in 2020



## IMPACT EXAMPLE

At the XII international conference "Decent work - the Foundation of a stable society" (Yekaterinburg, Russia) Dr Svetlana Lobova from AltSU presented the report "The "Female Face" of the Academic Profession". Dr Lobova reported on the research results on the status of women in academic profession at Russian universities, considered the issues of emotional labor, employment precarization and publication productivity of university women, and assessed the women positions in university management.

## INSTITUTION EXAMPLE

Phd Elena Romanova together with colleagues from Irkutsk National Research Technical University (Russia) the use of personality - oriented project in female students' physical education. The obtained results of project activities can be recommended for use in the educational process in «Independent work» section for creating other similar projects related to educational institutions students' health.

## ENGAGEMENT EXAMPLE

Female leaders are part of the AltSU top management. Vice-rectors for scientific and innovative development, for educational activities, for extra-curricular work and additional education are females.

The directors of the Institute of Biology and Botany, Institute of Social Sciences, Institute of Art and Design, Institute of Psychology are also females.





# ENSURE AVAILABILITY AND SUSTAINABLE MANAGEMENT OF WATER AND SANITATION FOR ALL



## TEACHING

**12** modules in EPs

**400+** students who could choose modules

## IMPACT EXAMPLE

Senior lecturer at the Department of Physical Geography and Geoinformation Systems of the Institute of Geography Galina Dyakova is author of the article "The internal structure of rock glaciers in Altai (The case of talus rock glaciers in Dzhelo River Valley)" which was recently published in the scientific journal "Ukrainian Journal of Ecology". Scientist cataloged all glacial-permafrost rock formations in Altai for the first time. Dyakova is completing a description of the latter objects and proceeding to calculating the volume of fresh water contained in the glacial-permafrost rock formations of the region. This data will be published in the next article in the professional academic journal "Ice and Snow", devoted to the issues of glaciology and cryology of the Earth.



## ENGAGEMENT EXAMPLE

The project "Clean Springs of Altai" was opened on 1.02.2020. It was attended by 90 schoolchildren and teachers from the districts of Altai Krai.

Project participants learned about the situation with regional rivers and lakes, were presented with sustainable water treatment and management. The special issue was the flood prevention in Altai Krai.

## INSTITUTION EXAMPLE

AltSU carries out the continuous monitoring of soil moisture in agricultural lands of Mikhailovsky District. The scientists used a network of automatic soil-hydrological stations. Moisture evaporation is recorded online by the only lysimeter in Russia.

Soil moisture control is a crucial factor in decision making to irrigate the soils and improves the water use efficiency in agricultural management.





# ENSURE ACCESS TO AFFORDABLE, RELIABLE, SUSTAINABLE AND MODERN ENERGY FOR ALL



## TEACHING

**13** modules in EPs

**250+** students who could choose modules



## RESEARCH



**18** publications in Scopus 2015-2019

**127** "cited by" in Scopus

## IMPACT EXAMPLE

AltSU launched the new extended education program "Energy saving and energy efficiency in a digital economy environment".

The purpose of this program is to improve and acquire new competencies required for professional activity and to improve the professional level of employees responsible for energy saving and energy efficiency at enterprises, organizations and institutions.

## INSTITUTION EXAMPLE

Alex Kalachev, Associate Professor of the Department of Computing and Electronics, Institute of Digital Technologies, Electronics and Physics created the automated system of laser phyto-lighting and microclimate monitoring of greenhouses.

The application of this system will reduce energy costs for greenhouse lighting by 50-80% and guarantee the high crops, proper taste, color and aroma of greenhouse cultures.

## ENGAGEMENT EXAMPLE

The Altai State University graduates Oleg Dontsov and Nikolay Moshkov founded the company as a resident of the Altai business incubator.

In just 5 years of operation, "Energy Saving Technologies" not only successfully announced itself in Barnaul and the region, but also found partners abroad. The company develops and produces a line of energy-saving industrial lighting fixtures, actively participating in the regional program that provides for the replacement of incandescent lamps with modern LED.



# PROMOTE SUSTAINED, INCLUSIVE AND SUSTAINABLE ECONOMIC GROWTH, FULL AND PRODUCTIVE EMPLOYMENT AND DECENT WORK FOR ALL

## IMPACT EXAMPLE

The scientists of Altai State University scientists discussed the strategy of social and economic development of Altai region till 2035 with its residents on 24.03.2020.

During project discussion, the representatives of business community of Altai Krai identified several key "boiling (tipping) points" that should ensure confident growth and development of the municipality. Among them: projects on territorial branding and formation of regional "face", media coverage of its activities, educational programs for youth and other population groups.



## INSTITUTION EXAMPLE

AltSU annually holds the "Business Idea Factory" contest. The competition is held within the framework of the regional project "Promotion of Entrepreneurship" and is aimed at creating conditions for the formation of entrepreneurial thinking among young people, development of business activity and support of competitive business ideas. In 2020, about 300 people took part in the contest and presented over 130 projects to the jury. A significant share of the projects are those on technological entrepreneurship. Participation in a splendid opportunity for young people to try themselves as a start-upper.



## RESEARCH

**55** publications in Scopus 2015-2019

**367** "cited by" in Scopus

## TEACHING



**84** modules in EPs

**3000+** students who could choose modules

## КАРЬЕРА ++

ОДИН ВУЗ,  
ДВА ДИПЛОМА!

+7 3852 29-81-63  
idpo@email.asu.ru



- Большой выбор программ профессиональной переподготовки
- Студентам АГУ - льготный тариф
- Срок обучения от 5 месяцев
- Гибкий график обучения, в том числе использованием дистанционных технологий
- Для поступления не нужно сдавать экзамены
- Высококвалифицированные преподаватели

## ENGAGEMENT EXAMPLE

AltSU is implementing a large-scale educational project "Career++".

Students are given the opportunity to obtain additional qualification or conduct a new type of professional activity along with mastering the main professional educational program.





# BUILD RESILIENT INFRASTRUCTURE, PROMOTE INCLUSIVE AND SUSTAINABLE INDUSTRIALIZATION AND FOSTER INNOVATION

## TEACHING



**36** modules in EPs

**800+** students who could choose modules



## IMPACT EXAMPLE

AltSU physicists Vladimir Plotnikov, Sergey Makarov, and Anna Makrushina patented a unique method to obtain a source of high-intensity electron flow. The field of practical application of the development of physicists at Altai State University is all that is associated with the modification of the surface structure of metals and giving it certain surface properties, such as high strength, high wear resistance, chemical resistance to aggressive environments.



## ENGAGEMENT EXAMPLE

The Engineering Center "PromBioTech" of the Altai State University has completed installation and commissioning of the basic cycle of development and production of pilot batches of biological preparations.

The full cycle, from research to the production of pilot batches of products based on our own developments and our own strains of bacteria, was carried out by the scientists of Altai State University for the first time.

Today, the Center has a full set of equipment, which allows to work out technological regimes and produce pilot batches of independently developed biological preparations.

## INSTITUTION EXAMPLE

To popularize and develop technological entrepreneurship among students, the Student Business Incubator for Innovation Projects was established at Altai State University. To form a list of innovative projects and their further "packaging" for the future promotion, participation in competitions and obtaining grant financing, the applications from all students, faculty and employees of the university are accepted on a permanent basis.

## TEACHING



**26** modules in EPs

**300+** students who could choose modules



## IMPACT EXAMPLE

AltSU implements a program of financial assistance. Scholarships are paid to orphans, disabled people, persons exposed to radiation as a result of radiation disasters. Financial assistance is paid to foreign and non-resident students twice a year to cover their travel expenses.



## ENGAGEMENT EXAMPLE

The literary and poetic event "Spring Charm" was held in Altai State University for international female students on 05.03.2020.

Foreign students read the poems by Russian poets, performed the songs dedicated to their mothers, guessed the professions in the pantomime contest, participated in the quiz "Famous world women".

## INSTITUTION EXAMPLE

Students from the Institute of Biology and Biotechnology entertained children with disabilities in the framework of the social project Mihutka.ru. The children visited the Nature Museum of Altai State University, where they listened to an interesting and informative lecture from the museum director Victor Petrov.

# MAKE CITIES AND HUMAN SETTLEMENTS INCLUSIVE, SAFE, RESILIENT AND SUSTAINABLE



## TEACHING



**76** modules in EPs  
**1400+** students who could choose modules



## IMPACT EXAMPLE

AltSU and the Administration of Barnaul jointly implement a city landscape project - "New Green Wave". It aims to improve the landscaping system to ensure environmental well-being and increase population satisfaction with the urban space, taking into account economic and social factors. The "New Green Wave" project is based on a global trend to weave nature into the urban environment using the principles of greening of natural ecosystems. AltSU biologists offer their original solutions in terms of landscape design and plant assortment in accordance with the climatic conditions of our region. The leading role is given to woody plants around which shrubs and herbaceous perennials are planted. Group plantings will imitate the natural environment, possibly widespread use of native species.

## ENGAGEMENT EXAMPLE

As part of "Museum Night 2020", AltSU demonstrated precious artifacts found during excavations in the Altai Territory and the Mountainous Altai. The collection of the Museum of Archaeology and Ethnography of AltSU contains more than 100 thousand items from the history of Altai from the Paleolithic Age to the late Middle Ages. Amazing finds of precious metals were made by archeologists of AltSU in Krasnoschekovsky, Loktevsky and Pavlovsky districts of Altai Krai and in the Republic of Altai. Some of them belong to the most ancient periods of history.

## INSTITUTION EXAMPLE

AltSU theater workshop "Homo Artisticus" presented a zoom-play "Network" on 13.06.2020. This is the first play in the history of the Altai Territory theatrical art, which takes place simultaneously on distant sites and at the same time brought together in a single whole using a zoom-platform.



## TEACHING

54 modules in EPs

1600+ students who could choose modules



### ОСНОВНАЯ НОМИНАЦИЯ ( КРЫШЕЧКИ)

- 1 место:**
- Если займет класс. Бесплатный мастер-класс для всего класса по изготовлению поделок от «Леруа Мерлен»
  - Если займет детский сад. Сертификат на 2000 р. от «Леруа Мерлен»
  - Напитки «Айчай» для всего класса/группы
  - Экоурок от «Мусора.Больше.Нет»
- 2 место:**
- Напитки «Айчай» для всего класса/группы
  - Экоурок от «Мусора.Больше.Нет»
- 3 место:**
- Напитки «Айчай» для всего класса/группы
  - Экоурок от «Мусора.Больше.Нет»

### ДОПОЛНИТЕЛЬНАЯ НОМИНАЦИЯ - ЗА МАКСИМАЛЬНОЕ КОЛ-ВО ВТОРСЫРЬЯ (крышечки+ал.банка+плат-бутылки+макулатура)

- Фотоэкскурсия для класса/детского сада творческой студии «ВВД Media»
- Напитки «Айчай» для всего класса/группы
- Экоурок от «Мусора.Больше.Нет»

**29 февраля - сдача!!! С 12:00 д 14:30**  
**ГЕОМАРКЕТ (пересечение Ленина и П.Сухова)**

Основная номинация 1,2,3 место присуждается за максимальное кол-во крышечек  
Дополнительная номинация - один главный приз - присуждается за общее кол-во вторсырья.

Организаторы оставляют за собой право изменить призы, а также выбрать другого победителя в дополнительной номинации, если участник уже занял в этом месяце призовое место в основной номинации.

Все вторсырье будет отправлено в переработку.

Вырученные средства от сдачи крышечек будут переданы в фонд «Облака»

Организатор конкурса: МОУ «Мусора.Больше.Нет, Барнаул» при поддержке

отдела по охране окружающей среды г.Барнаул

Подобранные в группе [https://vk.com/kryshki\\_enota](https://vk.com/kryshki_enota)

Контакты: Екатерина Терещенкова, 8 961 959 78 50

## INSTITUTION EXAMPLE

The scientists from Altai State University together with colleagues from the Altai State Agrarian University are developing the technologies for the production and use of drugs derived from raw plant products processing as regulators of crop growth. Scientists have patented the methods of chemical modification of wood processing waste and annual plants. The resulting product is called "Eco-Stim2".

## IMPACT EXAMPLE

The AltSU's Responsible Purchasing Policy is a key element in the university's commitment to leadership in sustainable development. The Policy is based on the standards of corporate procurement and corporate responsibility, applied worldwide and aimed at reducing the negative impact on the environment. Suppliers' compliance with socially responsible, resource-efficient, environmental and ethical business standards is an integral part of AltSU procurement policy.



## ENGAGEMENT EXAMPLE

Not many people think about the real miracle. Just stop throwing away plastic food caps. AltSU took part in the project "Coon Caps".

Students and staff collected plastic caps marked 2 (HPDE) and 5 (PP), capron caps from cans, caps from coolers, metal caps. All collected lids were recycled, the proceeds were sent to the charity fund "Clouds".

# TAKE URGENT ACTION TO COMBAT CLIMATE CHANGE AND ITS IMPACTS



## TEACHING

**37** modules in EPs

**1000+** students who could choose modules



## ENGAGEMENT EXAMPLE

AltSU organized the V annual international seminar of the Siberian network for the study of environmental changes (SecNet) "Siberia in the era of global challenges: human nature and human nature".

The seminar was held jointly with the Institute of water and environmental problems SB RAS (Barnaul, Russia), the Ministry of natural resources and ecology of the Altai territory and with the support of Tomsk state university and Ugra state university.

Directions of the seminar: modeling and forecasting the state and variability of the atmosphere and climate in Siberia and the Arctic; hydrology and water resources of Siberia and the Arctic in the context of climate change; water and land ecosystems of Siberia and the Arctic: current state and dynamics; population health and environmental quality of Siberia and the Arctic; social and economic problems of the regions of Siberia and the Arctic related to climate change.

## IMPACT EXAMPLE

Scientists of Altai State University Space Monitoring Center developed satellite technology for estimating the amount of associated petroleum gas (APG) burned in flare units. The satellite technology allows to remotely identify a number of characteristics of the operation of flare units in Western Siberia: the temperature of the mixture being burned, flame area, power of the heat radiation source and the amount of APG burned.

The advantage of the new technology lies in the fact that it is easy to apply it for a comparative analysis of a large number of emission sources simultaneously in large areas, including remote ones.



## RESEARCH



**32** publications in Scopus 2015-2019

**264** "cited by" in Scopus

## INSTITUTION EXAMPLE

Scientists of Altai State University installed six automatic weather stations on the territory of the Altai territory, which made it possible to obtain new data on regional features of climate variability.

## TEACHING



**33** modules in EPs

**900+** students who could choose modules

## IMPACT EXAMPLE

According to recent studies conducted in the Middle Ob basin, the entire population of ulcers is infected with opisthorchosis. Prof. Valery Zhuravlev found that infected fish is usually found in plain rivers and their floodplains, inhabited with freshwater mollusk batinia. The flat worms opisthorchids lay eggs in this mollusk, which is the food for the Cyprinidae fish. Prof. Zhuravlev gave the recommendations to residents of the Altai Krai how to cook the fish caught in the local rivers, so as not to get infected with the opisthorchosis.



## INSTITUTION EXAMPLE

Biologists from Altai State University studied the appearance of a two-meter crocodile in the river Chumysh in Altai Krai.

The appearance of this reptile in the rivers of Altai Krai was rather an escape from a private collection, explained the scientists.



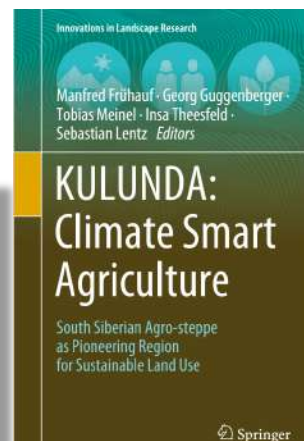
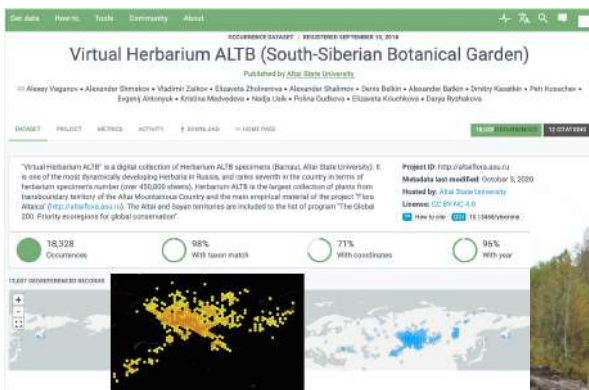
## ENGAGEMENT EXAMPLE

February 19 is the Day of Marine Mammals Protection. Students of the Institute of Biology and Biotechnology of Altai State University held an action to protect marine mammals. Participants of the environmental club "Under the open sky" told the students and staff of Alt State University what is important for these animals. The reduction of the number of whales and other marine animals leads to the violation of biological balance in marine ecosystems.





# PROTECT, RESTORE AND PROMOTE SUSTAINABLE USE OF TERRESTRIAL ECOSYSTEMS, SUSTAINABLY MANAGE FORESTS, COMBAT DESERTIFICATION, AND HALT AND REVERSE LAND DEGRADATION AND HALT BIODIVERSITY LOSS



## TEACHING

126 modules in EPs

1700+ students who could choose modules



## RESEARCH

33 publications in Scopus 2015-2019

286 "cited by" in Scopus

## IMPACT EXAMPLE

Prof. Roman Yakovlev took part in an international project to save the *Eucalyptus pellita* F. Muell. (Myrtaceae) in Riau, Indonesia (Lepidoptera: Cossidae, Zeuzerinae) from a pest species *Polyphagozerra coffeae*. The results were published in "SHILAP Revista de lepidopterologia".

In 2020, the Springer Publishing House published the book "KULUNDA: Climate Smart Agriculture. South Siberian Agro-Steppe as Pioneering Region for Sustainable Land Use". It presents the results of a five-year joint Russian-German project to study land use in the Kulunda steppe of the Altai region. The monograph includes 5 chapters and 38 articles (500 pages with illustrations), which cover a wide range of agronomic, geoecological and socio-economic problems, one of the most important agricultural transboundary regions of Russia - Kulunda Steppe.

## INSTITUTION EXAMPLE

The University is working to assess the plant resources in the Altai Mountainous Country using biodiversity informatics and bioclimatic modeling techniques. Altai State University takes the sixth position in Russia in terms of the activity of the official IPT (Integrated Publishing Toolkit) GBIF nodes.

In total there are 292 installations of IPT nodes in 74 countries, and in Russia there are only eight of them.

## ENGAGEMENT EXAMPLE

Students of the University took part in the action of planting the cedar seedlings on the Srednyi Uksunai River in the first national park "Salair" in the Altai Krai.

The volunteers of the regional club "MyVmeste", representatives of the Altai Volunteer Resource Center, the youth government of the Altai region, activists of the regional program "Adopt Zakaznik", as well as clubs of friends of Tigirek Reserve and "AltaiNature" also took part in the planting of cedar trees..

## IMPACT EXAMPLE

Scientists from Altai State University have published a series of training manuals on mediation of interethnic and interfaith conflicts. Representatives of more than 156 peoples and nationalities live in the border regions of Western Siberia (in particular, Altai Krai, Altai Republic, Omsk and Novosibirsk regions), many of them come from different regions of Russia and CIS countries. Scientists concluded that it is important to activate civil society institutions in the sphere of forming positive interethnic and intercultural dialogue to prevent ethnic conflicts. In the practice of ethnic conflict resolution, the mediation has proven to be an extremely flexible and effective method that exceeds the capabilities of the traditional judicial system.

## TEACHING



**67** modules in EPs

**2500+** students who could choose modules



## RESEARCH



**18** publications in Scopus 2015-2019

**44** “cited by” in Scopus



## ENGAGEMENT EXAMPLE

The project "Lawyers to the Population" took place as part of the annual All-Russian Patriotic Action "Snow Troops of the Russian Federation" during 30.01- 09.02.2020.

Within 10 days the action participants visited 19 municipal districts of the Altai Krai, where free legal aid offices worked daily.

During the project more than 100 appeals of citizens were recorded.

## INSTITUTION EXAMPLE

Director of Law Institute Prof. Anton Vasilyev was elected as the Chairman of the Commission on Education, Science and Culture of the Public Chamber of Altai Krai of the seventh convocation. Public Chamber - a body that carries out the interaction of citizens with government and local authorities to take into account the needs and interests of citizens, to protect their rights and freedoms in the formation and implementation of public policy, as well as for the purposes of public control over the activities of government agencies.



ALTAI  
STATE  
UNIVERSITY



w: [www.asu.ru/en/](http://www.asu.ru/en/)



@altaistateuniversity