



ALTAI
STATE
UNIVERSITY



**Impacting the Global Goals by
DEGREEs – 2021**



KEY FACTS ABOUT ALTAI STATE UNIVERSITY



- **500+** summer school participants, including international
- **50+** winners and prize-winners of All-Russian student olympiads
- **1800+** open access video lectures
- **40+** scientific journals
- **TOP-10** free online electronic university libraries in Russia (Webometrics)

- **9** buildings
- **5** dormitories
- **80+** hectares area occupied by buildings and dormitories
- **30%+** trees in the area owned by the university
- **8500+** students and trainees
- **2500+** international students
- **3000+** are trained remotely
- **2000+** students live in dormitories
- **560+** faculty staff provide training of all levels and areas





THE GLOBAL GOALS AT ALTAI STATE UNIVERSITY



MISSION OF ALTAI STATE UNIVERSITY IN THE FIELD OF SUSTAINABLE DEVELOPMENT

Located in the heart of Siberia, Altai State University is one of the leading universities committed to international excellence, world-changing research, and high-quality, inspiring teaching.

We support national, gender, racial equality among our employees and students, respect their religion; strive to expand participation in higher education by entering into consortia and scientific networks with leading universities in the world; engage with local, national, and international communities on development and equity issues. This is all part of what we do and who we are.

We are committed to contributing to the achievement of the UN Sustainable Development Goals by incorporating them into our social responsibility strategy.

We contribute to the achievement of the UN Sustainable Development Goals, annually, gradually, step by step, by implementing training programs, conducting events, and participating in research aimed at ensuring the sustainable development of the world, country, territory, and organization.

THE UNIVERSITY IMPACT RANKINGS

In 2021, Altai State University has become the first among Russian universities and took 101-200th place in the global TNE University Impact Rankings, for four SDGs (SDG 4, SDG 7, SDG 8, and SDG 16) the university entered the TOP-100 universities in the world.

The methodology of THE University Impact Rankings is based on the analysis of three areas of university activities: research - creating knowledge to solve the most pressing global problems; socially oriented programs - the direct activity of the university in society; management - resource management, the contribution of the university to education in a broad sense. Elsevier data, quantitative and qualitative indicators of universities are used.

When forming the final score of Altai State University in the ranking in 2021, the achievements in the areas of SDG 4, SDG 8, SDG 16 have been taken into account.

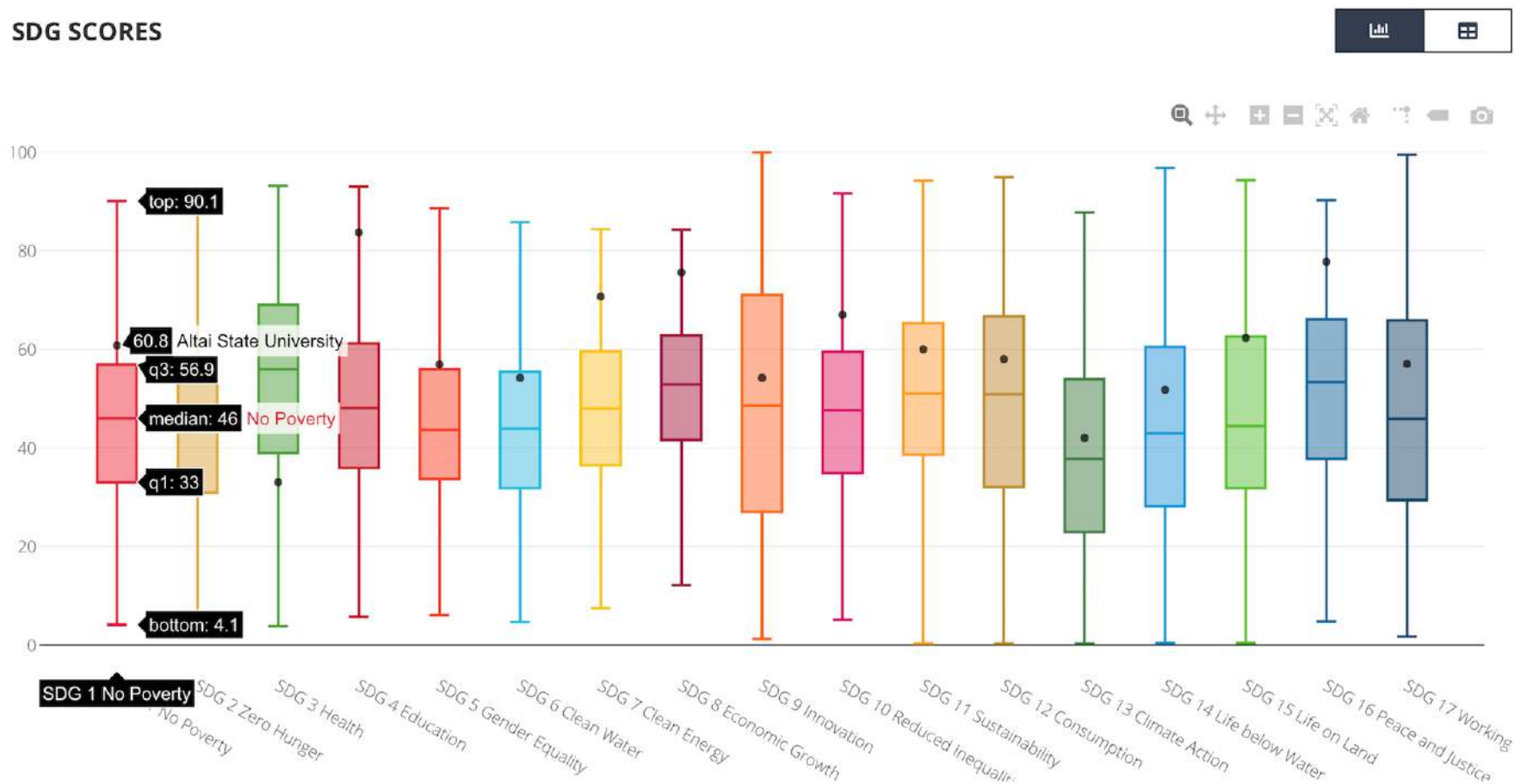




SUSTAINABLE DEVELOPMENT GOALS BREAKDOWNS AT ALTAI STATE UNIVERSITY

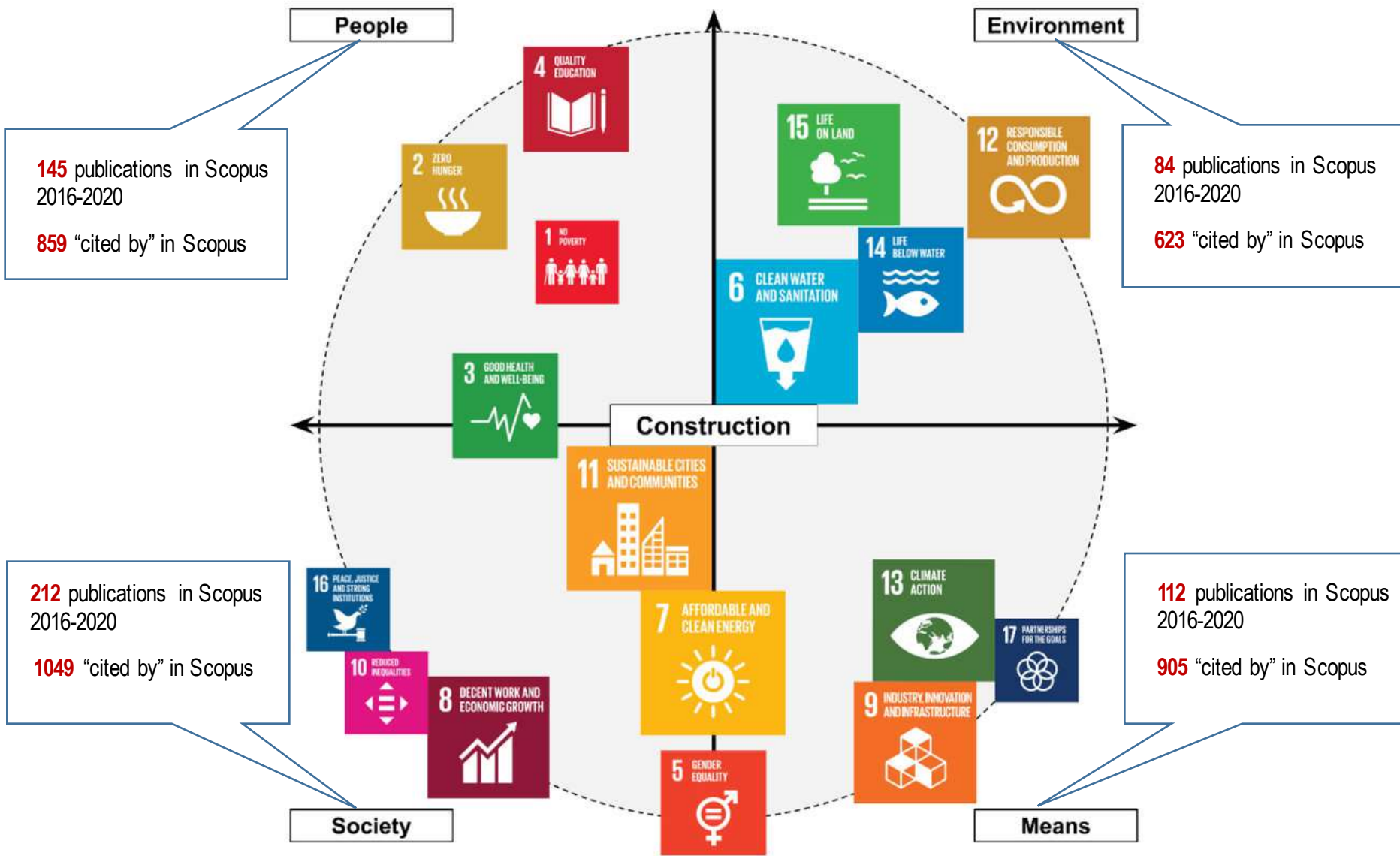


SDG SCORES





AIATSU PUBLICATIONS ON SUSTAINABLE DEVELOPMENT



https://www.researchgate.net/publication/336893661_On_the_Role_of_Construction_in_Achieving_the_SDGs



END POVERTY IN ALL ITS FORMS EVERYWHERE

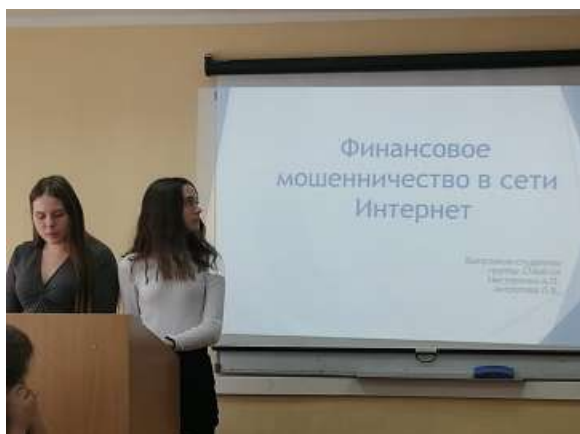


TEACHING



15 modules in EPs

500+ students who could choose modules



ENGAGEMENT EXAMPLE

The round table brought together college students of the Banking specialty, students of the Altai Industrial and Economic College with a specialization in Finance and Insurance, and teachers. The following topics were discussed: Rosfinmonitoring activities in the field of counteracting the “legalization” of ill-gotten gains, activities of financial pyramids, insurance fraud, Internet fraud, and credit card fraud. The roundtable participants came to the general conclusion that fraud is the most common crime in the financial sector, and more and more varieties appear every day. Everyone can become a victim of fraud, so you need to know the most common methods of fraud used by cybercriminals.

INSTITUTION EXAMPLE

For 1st and 2nd-year undergraduate students receiving “good” and “excellent” marks at the exams, increased financial assistance is available. Students need to obtain a certificate of student status. Method of receipt: the scanned certificate of student status will be submitted personally to the student through e-mail / social networks, and also, in the absence of contact with the student, through the monitor of the group.

IMPACT EXAMPLE

Prof. Svetlana Lobova is a member of the working group established under the Government of Altai Krai to combat poverty. As part of the working group, prof. Lobova coordinates the development and implementation of measures to help residents of Altai Krai overcome a difficult life situation and increase their income. Particular attention is paid to increasing the income of young people who have just graduated from school or university. The support measures for this category of the population of Altai Krai include social benefits which are paid if the income of families is very low or if they cannot find a job for 6 months.





END HUNGER, ACHIEVE FOOD SECURITY AND IMPROVED NUTRITION AND PROMOTE SUSTAINABLE AGRICULTURE



IMPACT EXAMPLE

Scientists from Altai State University and Altai State Agrarian University have developed and patented a method to increase the yield of spring wheat. The preparation provides an increase in the yield of spring wheat by the method of chemical modification of waste products of crop production - oat flowering films. The patent is based on the results of the implementation of the joint project "Development of technology for the production and use of preparations obtained from the products of processing plant raw materials as growth regulators of agricultural crops." The inventors propose to use an aqueous solution of the preparation in a tank mixture as an adhesive when treating spring wheat crops in the tillering phase against weeds.

TEACHING



38 modules in EPs

200+ students who could choose modules]



ENGAGEMENT EXAMPLE

At AltSU, within the framework of the intensive "From Idea to Prototype" of the University 20.35, future biotechnologists and genetic engineers from the Institute of Biology and Biotechnology, within the framework of the "Papa Gene" youth laboratory, presented a project to develop a recombinant sweetener protein based on brazzein, a sweet-tasting protein isolated from fruits of the West African plant *Pentadiplandra brazzeana*. The presented sugar substitute has a number of advantages over the existing ones: (1) it is a product of a protein nature, similar in its properties to sucrose, which has no analogues yet; (2) it is low in calories and low on the glycemic index; (3) it is thermostable, meaning it can be heated to certain temperatures, and is 502,000 times sweeter than regular sugar.

INSTITUTION EXAMPLE

As part of the "Smart" food is a biohacking tool" section of the All-Russian festival NAUKA 0+, held in Altai Krai on September 17, dedicated to personalized nutrition, residents of the Student Business Incubator of Altai State University presented an innovative product - marmalade (four types), made of natural ingredients, such as pectin, dry honey, lupine products, and meitake mushrooms (*Grifola frondosa*). This is a tasty and healthy product for children, compensating, in particular, for the lack of fiber in the body.



ENSURE HEALTHY LIVES AND PROMOTE WELL-BEING FOR ALL AT ALL AGES



TEACHING



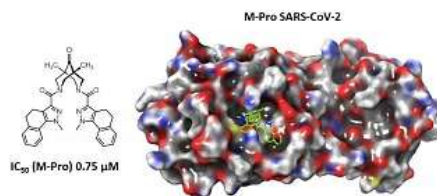
38 modules in EPs

350+ students who could choose modules



IMPACT EXAMPLE

Scientists from the Research Institute of Biomedicine of Altai State University have created a unique method for restoring damaged human skin. According to their method, a small sample of skin is taken from the surviving area of the patient, which is transferred to the damaged area of the body. Skin cells are activated and repair the damaged part of the body by themselves. The technique will be especially important for patients who have received serious burns.



ENGAGEMENT EXAMPLE

AltSU scientists use dangerous hogweed to produce a useful remedy to treat psoriasis. Pharmacy students are studying one of the most common weeds in our country – Sosnovsky's hogweed (Heracléum Sosnóvskyi) under the guidance of Vitaly Tsarev, researcher at the laboratory of Industrial Pharmacy and Supercritical Fluid Technologies, and Olga Vysotskaya, Director of the Center for the Development of Technological Entrepreneurship, Technology Transfer and Intellectual Property Management. The leaves and fruits of this plant are rich in essential oils containing furanocoumarins, two of which can help relieve skin diseases. Thus, the first task of the project developers is to obtain pharmacologically active substances from hogweed to treat psoriasis, and the second is to eliminate the uncontrolled thickets of this plant.

INSTITUTION EXAMPLE

In order to prevent the spread of coronavirus infection COVID-19, AltSU organized free vaccination for university employees and students with the Sputnik V vaccine (Gam-COVID-Vac).



ENSURE INCLUSIVE AND EQUITABLE QUALITY EDUCATION AND PROMOTE LIFELONG LEARNING OPPORTUNITIES FOR ALL



INSTITUTION EXAMPLE

On October 12 the Institute of Humanities of Altai State University presented new programs of the educational project "Career ++". The project provides students with the opportunity, simultaneously with mastering the main professional educational program, to obtain additional qualifications or the right to conduct a new type of professional activity. Participation in the project is an excellent chance to acquire new topical personal, interpersonal, and professional competencies necessary for successful self-realization in the professional field and career growth.

ENGAGEMENT EXAMPLE

On October 21, Altai State University, together with the Peoples' Friendship University of Russia and the Russian Presidential Academy of National Economy and Public Administration, within the framework of the project "Export of Education", held an All-Russian scientific and practical conference with the international participation of heads and staff of international university services "Export of Education as a Factor of Development of Regions in Siberia: interim results, trends, and prospects." 2021 has been the year when we are ready for these restrictions, much could have been predicted, but the turbulence continues and therefore the issues of summing up the results of this year's admissions campaign and the interim results of the transformation and adaptation of the educational system to new conditions, along with rethinking the role of international cooperation and the education export in the new programs of strategic development of universities, implemented within the framework of the "Priority 2030" project.

IMPACT EXAMPLE

New programs of additional vocational education of the Humanitarian Institute entered the international market of educational services. The Institute is successfully implementing the project "Center for Continuing Art Education", a feature of which is a many-stage education system in the field of creative industries. One of the topical areas of the Center's activities in the field of continuing education is the promotion of educational services developed by the Center's specialists for continuing education programs in the international market, among which advanced training programs in the areas of "Art History" and "Musical Art" have become especially in demand.



TEACHING

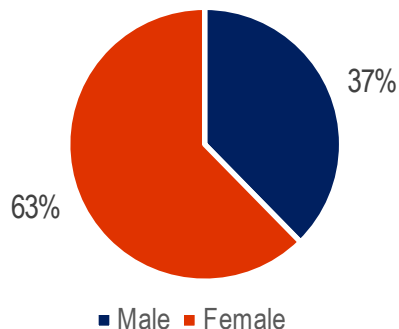
125 modules in EPs

5200+ students who could choose modules



ACHIEVE GENDER EQUALITY AND EMPOWER ALL WOMEN AND GIRLS

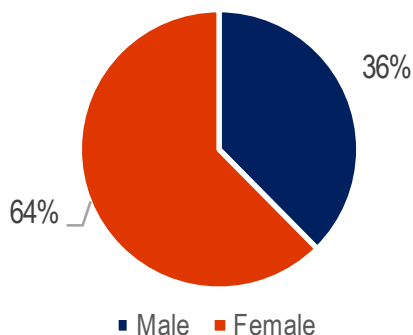
Gender ratio among faculty in 2021



IMPACT EXAMPLE

At the XII international conference "Decent work as the Foundation of a Stable Society" (Yekaterinburg, Russia) Dr Svetlana Lobova from AltSU presented the report "The "Female Face" of the Academic Profession." Dr Lobova reported on the research results on the status of women in academic profession at Russian universities, considered the issues of emotional labor, employment precarization and publication productivity of university women, and assessed the women's positions in university management.

Gender ratio among 1st year students in 2021



INSTITUTION EXAMPLE

(a) AltSU treats female employees with great respect. On March 5, Altai State University hosted a large festive program dedicated to International Women's Day on March 8. At the event, honoring of teachers and employees of the Altai State University took place. Six women received awards of various levels.

(b) Annually, Altai State University summarizes the results of labor activity among employees for their personal contribution to the development of the university, who have achieved significant results in various fields, taking an active part in the social life of the university. In 2021, 34 women workers were included in the Gallery of Honor.



ENGAGEMENT EXAMPLE

Prof. Svetlana Maksimova became a laureate of the national award "Professor of the Year - 2021". She became the only winner of the prize in the category "Sociological Sciences".



ENSURE AVAILABILITY AND SUSTAINABLE MANAGEMENT OF WATER AND SANITATION FOR ALL



TEACHING



18 modules in EPs

450+ students who could
choose modules



IMPACT EXAMPLE

AltSU scientists Galina Dyakova, Oleg Ostanin, and Anna Lebedeva spoke at the International Scientific and Practical Forum on Natural Resources, the Environment, and Sustainability with the report "The Application of GIS Technologies and Remote Sensing Data to Determine the Morphometric Features of the River Basin: The Case of the Upper Part of the Charysh River." They examined the possibilities of using the technology of geographic information systems (GIS-technologies) and data on the Earth remote sensing to identify the morphometric parameters of the river basin on the example of the upper part of the Charysh River (Russia). The use of GIS technologies allowed scientists from Altai State University to establish about 6000 potential sources (stone glaciers) of fresh water in the Altai mountains.

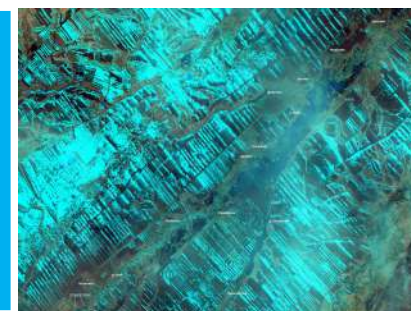


ENGAGEMENT EXAMPLE

The Laboratory of Space monitoring and Computational Technologies of Altai State University helps to predict the flood situation in Altai Krai in the region of the Upper Ob basin. The data for the forecast is formed on the basis of information on the structure of snow cover in the territories of Altai Krai and the Altai Republic.

INSTITUTION EXAMPLE

AltSU takes care of access to clean water at all facilities of its infrastructure. The water well based on the training practices of Altai State University "Goluboy Utes (Blue Cliff)" in Charyshsky District is intended for drinking and domestic water supply to the base. The well was drilled to the depth of 37m and has a maximum flow rate of 2.5 m³ / hour. A storage tank with a volume of 9m³ is installed above the well. AltSU has a license for subsoil use until 2045.





ENSURE ACCESS TO AFFORDABLE, RELIABLE, SUSTAINABLE AND MODERN ENERGY FOR ALL



TEACHING

13 modules in EPs

250+ students who
could choose
modules



IMPACT EXAMPLE

The authoritative Dutch journal *Geoderma* published an article by an international scientific team, which included Associate Professor of the Department of Economic Geography and Cartography of the Institute of Geography of Altai State University Andrei Bondarovich. The article "Consequences of chemical pretreatments in particle size analysis for modeling wind erosion" is devoted to the study of soil particle size distribution and its effect on soil carbon content to assess the potential of soil erosion in Kazakhstan. According to the estimates of the World Agricultural and Food Organization (FAO), Kazakhstan is one of the world's largest grain exporters. So, in 2009 it demonstrated its yield potential with 2.5% of world wheat production (*Triticum L.*). Being the largest country in Central Asia, it is the most important grain exporter with up to 84.5 million hectares of agricultural land. At the same time, Kazakhstan, according to A. Bondarovich is likely to become one of the "hot spots" of heat stress for wheat in the scenario of future climate change A1B (2071–2100). Water scarcity and wind erosion will affect agricultural productivity in Kazakhstan by about 25.5 million hectares.

INSTITUTION EXAMPLE

Alex Kalachev, Associate Professor of the Department of Computing and Electronics, Institute of Digital Technologies, Electronics and Physics created the automated system of laser phyto-lighting and microclimate monitoring of greenhouses. The application of this system will reduce energy costs for greenhouse lighting by 50–80% and guarantee the high crops, proper taste, color and aroma of greenhouse cultures.

ENGAGEMENT EXAMPLE

The Altai State University graduates Oleg Dontsov and Nikolay Moshkov founded the company as a resident of the Altai business incubator. In just 5 years of operation, "Energy Saving Technologies" not only successfully announced itself in Barnaul and the region, but also found partners abroad. The company develops and produces a line of energy-saving industrial lighting fixtures, actively participating in the regional program that provides for the replacement of incandescent lamps with modern LED.

PROMOTE SUSTAINED, INCLUSIVE AND SUSTAINABLE ECONOMIC GROWTH, FULL AND PRODUCTIVE EMPLOYMENT AND DECENT WORK FOR ALL

IMPACT EXAMPLE

Since the beginning of the year, more than 200 people from various cities and municipal districts of Altai Krai have participated in training at AltSU within the framework of the federal project «Promotion of Employment». AltSU assists in the employment of certain categories of citizens by organizing vocational training and additional vocational education. The goal is to ensure the competitiveness and professional mobility of citizens in the labor market of the region at the expense of the federal budget. Support for the implementation of the project at AltSU is provided by the Altai Krai Administration for Labor and Employment of the Population. The federal project "Promotion of Employment" is aimed at free training for professions in demand in Altai Krai and providing employment to help socially vulnerable categories of the population: citizens of pre-retirement age; citizens looking for work and applying to the employment services, including the unemployed; women who are on parental leave to care for children under the age of 3; citizens aged 50 and over; women who are not in an employment relationship and have preschool children.

TEACHING



85 modules in EPs
3000+ students who could choose modules



INSTITUTION EXAMPLE

AltSU follows a policy of protecting the labor rights of its employees. To protect labor rights, an employee, having notified the employer or his immediate superior or other representatives of the employer in writing, may refuse to perform work not provided for in the employment contract, as well as refuse to perform work that directly threatens his life and health. An individual labor dispute is considered by the Labor Disputes Commission if the employee independently or with the participation of his representative has not settled the disagreements during direct negotiations with the employer. The employee can apply to the labor dispute committee within three months from the day when he or she learned or should have learned about the violation of his or her right. If the time limit is missed for good reasons, the labor dispute committee may restore it and settle the dispute on the merits.

ENGAGEMENT EXAMPLE

AltSU became the winner of the competition "Collective agreement as the basis for the protection of labor rights of workers," which is held by the Administration of the city of Barnaul, is holding a competition on social partnership in the sphere of employment. The victory in this competition proves that AltSU has one of the best social guarantees in the region. This includes an estimate of social expenses for 13 million rubles, material assistance, the title of Veteran of Altai State University, New Year's gifts, and the company vehicle. All this is due to the social partnership of the trade union committee and the university.

TEACHING



35 modules in EPs

600+ students who
could choose modules

ENGAGEMENT EXAMPLE

The renovation of dormitory No. 4 on Krupskaya Street has been completed. The walls of the building were sheathed with a new bright facade, balconies were renewed, and corridors, the stairwells, and the rooms have been repaired. Capital repairs of dormitory No. 3 on Emilia Alekseeva Street are continuing. Due to its layout, the rooms of the dormitory are spacious and with high ceilings, which is a definite advantage for students. The renovation began in the sports and recreation complex. The building was built back in the 90s, and by 2021 it required major changes.

IMPACT EXAMPLE

Since 2019, AltSU scientists and students have been participating in the development of strategies for the socio-economic development of rural areas in Altai Krai. In 2021, the team of the project "Sustainable Development of Altai Territories in the Transboundary Space", which brings together representatives of the Economic Institute, the Institute of Geography, and the Institute of Biology and Biotechnology, developed a sustainable development strategy for Talmensky District. The developed strategy creates additional opportunities for the organizations of the municipality to receive various forms of financial support from the national and regional budgets, inexpensive bank loans for the development of infrastructure and innovative development, and will strengthen their integration into value chains and markets. Within the framework of the strategy, it is planned to implement a number of projects aimed at developing business, education, and supporting "green" innovations, taking into account the investment and intellectual potential of the region.



INSTITUTION EXAMPLE

On September 24, III International Biotechnology Symposium "Bio-Asia Altai 2021", organized within the framework of the International Forum "Biotechnology: Science, Education, Industry" under the auspices of the Year of Science and Technology, started work at AltSU. The opening of the symposium was preceded by an exhibition of research developments and biotechnological products of scientific teams of the flagship university of Altai Krai, located in the foyer of AltSU's concert hall: microbiological preparations for agriculture, innovative biological products and technologies for agro-industrial complex, healthy planting material based on the method of clonal micropropagation of plants in vitro as well as developments in the field of personalized nutrition.

IMPACT EXAMPLE

We appreciate how the diversity of teachers and students can contribute to education and ethics. Therefore, we do our best to ensure equal protection for all employees and students, regardless of their race, nationality, gender, age or sexual orientation.

AltSU implements a program of material assistance to those in need. Scholarships are paid to orphans, people with disabilities, people who have been exposed to radiation as a result of radiation disasters. Financial assistance is paid to foreign and nonresident students twice a year for travel to the place of residence.

INSTITUTION EXAMPLE

Volunteer biologists together with the social project Mihutka.ru welcomed children with physical conditions. The children visited the Museum of Nature of Altai State University, where they listened to an interesting and informative lecture from Director of the museum, Candidate of Biological Sciences, Victor Petrov.



ENGAGEMENT EXAMPLE

The national holiday of the Persian and Turkic peoples Navruz on March 18-19, 2021 was celebrated at AltSU. It began with the meeting of the main symbol of Navruz - the spring girl. She entered the territory of the dormitory on a white horse, accompanied by four horsemen who represented the four peoples of Asia: Kazakhs, Kyrgyz, Tajiks, and Uzbeks. Foreign students introduced the guests of the holiday to their traditions, dances and songs, and also generously treated them to their cuisine.

TEACHING



29 modules in EPs

250+ students who could choose modules

MAKE CITIES AND HUMAN SETTLEMENTS INCLUSIVE, SAFE, RESILIENT AND SUSTAINABLE



TEACHING

81 modules in EPs

650+ students who could choose modules



IMPACT EXAMPLE

AltSU became the winner of the competition for the development of the concept "Barnaul is a green city". The project team assessed the vital state of the species composition, phytopathological examination of tree plantations, herbaceous plants and flower crops in key areas of Barnaul, as well as compliance with greening standards in different parts of the city, justified the creation of new green zones to form the socio-ecological frame of the city. It is planned to create a Web-GIS of the project "Lenin avenue from the street Malo-Tobolskaya to October square (within the red lines)", a database on green spaces and the creation of a sketch (visualization), the development of proposals for the use of new modern greening technologies (surface, vertical, container) and landscape solutions in relation to the climatic and environmental conditions of the city of Barnaul.

ENGAGEMENT EXAMPLE

The Universum Gallery of Altai State University hosted an exhibition of Anton Kondakov, a graduate student of the Institute of Arts and Design of Altai State University, an Altai painter, a member of the Union of Artists of Russia, entitled "Return of the Forgotten Spring". The exhibition presents 35 works in the landscape genre, the artist's work for the past three years. One of the leading themes of his paintings is the rural landscape with its quiet rivers, small streets, houses, peasant estates, haystacks, and everything that still makes up the life of a modern villager, as well as picturesque corners of the Altai Mountains.

INSTITUTION EXAMPLE

Since November 2020, at the Center for the Creative Industry for Young Talents of Altai - School of Early Aesthetic Development "Unicum" of the Center for Continuous Art Education of the Humanitarian Institute, classes are held in a new direction – the School of Fashion and Style, which provides students with the opportunity to go beyond the educational program and learn the basics of stylistics, runway walk, and acting, as well as consolidate skills, working together with a professional mentor to create an advertising image.

TEACHING



67 modules in EPs

1800+ students who
could choose modules

ENGAGEMENT EXAMPLE

The event "ECODVOR" was held at Rubtsovsk Institute (branch) of Altai State University. The "ECODVOR" event is aimed at involving students and residents of the city of Rubtsovsk in the practice of separate waste collection. The staff and students of the Institute took part in it. There were interactive platforms at the event: darmarka (free fair or exchange of things); book circulation (exchange of books); second life for things (exchange of things); info corners (alternatives to the usual plastic things, things made from recycled materials, ECO brochures and an information stand about the dangers of garbage).

INSTITUTION EXAMPLE

Results of a large environmental action for waste paper collection are summed up. From November 22 to December 6, the Rubtsovsk Institute (branch) of the Altai State University held an eco-action to collect waste paper. The main goal of the action is to develop a culture of separate waste collection among young people. Over 100 students collected 464 kg of waste paper in two weeks.

These are the most active participants of the action:

1st place - Vasilina Dobosh (group 1295) - 104.5 kg;

2nd place - Bogdan Volkhin (group 1285S9-1) - 90.4 kg;

3rd place - Vladislav Chernikov (group 1295C11) - 48.9 kg.

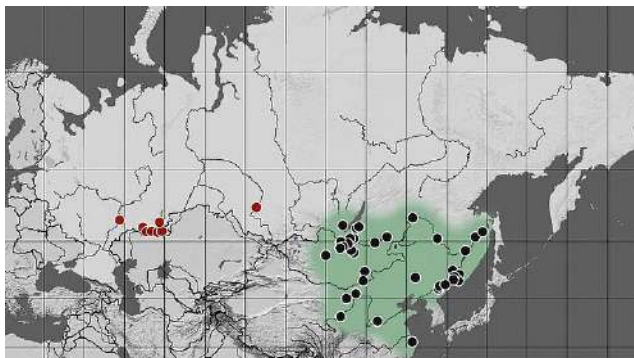


IMPACT EXAMPLE

The AltSU's Responsible Purchasing Policy is a key element in the university's commitment to leadership in sustainable development. The Policy is based on the standards of corporate procurement and corporate responsibility, applied worldwide and aimed at reducing the negative impact on the environment. Suppliers' compliance with socially responsible, resource-efficient, environmental and ethical business standards is an integral part of AltSU procurement policy.



TAKE URGENT ACTION TO COMBAT CLIMATE CHANGE AND ITS IMPACTS



IMPACT EXAMPLE

Physicists from Altai State University are implementing a project to assess greenhouse gas emissions by oil industry enterprises in Siberia. Greenhouse gases include methane, which affects climate change on the planet and catalyzes temperature increases. Within the framework of the project, flare facilities will be inventoried based on satellite observations in 2019-2021, greenhouse gas emissions by oil industry enterprises will be assessed, and a climate model for Western Siberia will be developed using a chemical version of the regional climate model.

ENGAGEMENT EXAMPLE

Postgraduate student of the Institute of Biology and Biotechnology of Altai State University Svyatoslav Knyazev with colleagues-entomologists spoke about an important find confirming the serious climatic changes taking place on our planet in the article "The first discovery of *Catocala helena* Eversmann, 1856 (Lepidoptera, Erebidae) in Europe with notes on its distribution in Russia."

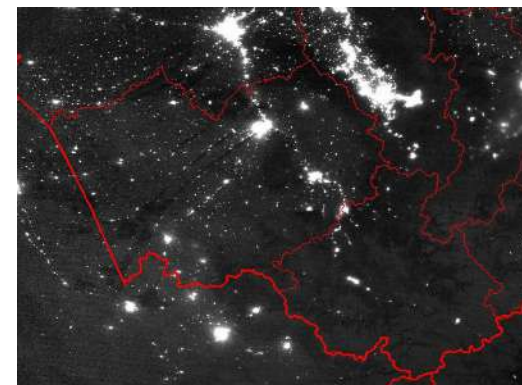
For the first time, it is reported about new settlements in the South Urals and in Western Siberia, where scientists have recorded the appearance of a previously not inhabited Eastern Palearctic species *Catocala helena* Eversmann. According to the results of research by entomologists, the distribution of this species has expanded by more than 2500 km to the west.



TEACHING

36 modules in EPs

1000+ students who could choose modules



INSTITUTION EXAMPLE

Students of the Institute of Geography continue their long-term series of observations of the dynamics of snow cover on the territory of Barnaul pine forest belt. The technique of carrying out snow-measuring works makes it possible to study climate change in the layers of snow cover and the territory of snow accumulation. Analysis of annual snow cover maps confirms the hypothesis of climate change.

TEACHING



35 modules in EPs

500+ students who could choose modules

IMPACT EXAMPLE

According to recent studies conducted in the Middle Ob basin, the entire population of ulcers is infected with opisthorchosis. Prof. Valery Zhuravlev found that infected fish is usually found in plain rivers and their floodplains, inhabited with freshwater mollusk batinia. The flat worms opisthorchids lay eggs in this mollusk, which is the food for the Cyprinidae fish. Prof. Zhuravlev gave the recommendations to residents of the Altai Krai how to cook the fish caught in the local rivers, so as not to get infected with the opisthorchosis.



INSTITUTION EXAMPLE

AltSU scientists found amazing fish and centuries-old relics in Altai. Lamprey is included in all international conventions, red books. This is an amazing creature and we should do everything to save it.



ENGAGEMENT EXAMPLE

February 19 is declared Marine Mammal Protection Day. Students of the Institute of Biology and Biotechnology of Altai State University held an action to protect marine mammals. Participants of the environmental club "Under the open sky" told the students and staff of Alt State University what is important for these animals. The reduction of the number of whales and other marine animals leads to the violation of biological balance in marine ecosystems.

PROTECT, RESTORE AND PROMOTE SUSTAINABLE USE OF TERRESTRIAL ECOSYSTEMS, SUSTAINABLY MANAGE FORESTS, COMBAT DESERTIFICATION, AND HALT AND REVERSE LAND DEGRADATION AND HALT BIODIVERSITY LOSS



TEACHING

127 modules in EPs

1600+ students who could choose modules



IMPACT EXAMPLE

(A) Prof. Roman Yakovlev and prof. Vadim Zolotukhin from the Ulyanovsk State Pedagogical University described two new genera of butterflies from the tropical family Metarbelidae, which are pests of fruit trees. The results of the work are published in "Ecologica Montenegrina".

(B) Associate Professor Aliya Gabdullina received unique video footage of a snow leopard in the Kazakh part of Altai for the first time. In November 2020, a camera trap was installed, with the help of which more than 250 videos were obtained, which captured Siberian mountain goats, Alpine jackdaws, sable, wolverine, and Altai snowcocks, listed in the Red Book of the Republic of Kazakhstan. The video of the snow leopard is especially valuable.

INSTITUTION EXAMPLE

Specialists of Altai-Falcon Altai State University, expanding the scale of work to preserve the biological diversity of natural complexes of the Greater Altai, in May of this year released 10 Saker Falcons into the wild on the territory of the Sayyugemsky National Park (the Altai Republic), as well as in the Kornilovsky reserve in Kamensky District of Altai Krai and in the natural park "Altai Foothills" on the territory of Smolensky District. The release of birds is part of the Saker Falcon Reintroduction Program in Altai Krai and the Altai Republic for the period 2021–2026, which was supported by Rector of Altai State University Sergei Bocharov.

ENGAGEMENT EXAMPLE

AltSU biologists have developed an assortment of tree crops for settlement landscaping in Altai Krai. Methodological recommendations "Assortment of ornamental trees and shrubs for settlement landscaping of Altai Krai" were published in Barnaul. The book presents an assortment of 300 species and varieties of woody crops, including ligneous lianas, proposed for settlement landscaping in Altai Krai, taking into account the climatic features of natural zones and altitudinal belts in accordance with the research of scientists from the Institute of Higher Economic Policy SB RAS.

IMPACT EXAMPLE

Director of the Law Institute of Altai State University Anton Vasiliev was elected Chairman of one of the key committees of the Altai Regional Legislative Assembly – the committee on budgetary, tax, economic policy, and property relations. The committee headed by A. Vasilyev will begin consideration of the draft law of Altai Krai "On the budget of Altai Krai for 2022 and the planning period."



INSTITUTION EXAMPLE

On October 21-28, more than 830 teachers and employees of Altai State University were trained under the advanced training program "Organization of countering terrorist activities in educational organizations." The advanced training took place on the basis of the Center for Retraining and Advanced Training of the Law Institute together with the Regional Antiterrorist Scientific and Methodological Center of Altai State University. The training was organized using distance learning technologies at the AltSU Open Educational Portal. The aim of the program was to develop competencies among university employees to prevent the spread of extremist and terrorist ideology in educational organizations. Particular attention is paid to the order of actions of teachers, students, and university staff in the event of terrorist threats, school shooting, and other illegal actions that threaten the life and health of citizens.

TEACHING



66 modules in EPs

8000+ students who could choose modules

ENGAGEMENT EXAMPLE

On the basis of the Law Institute, the Center for Legal Assistance to the Population continues its work. The Center employs students of the Law Institute, who, under the guidance and mentoring of qualified teachers, work pro bono for citizens of Altai Krai who do not have sufficient funds to hire professional lawyers, give an oral or written opinion on the case, and help to draw up the necessary documents for applying to court or other government bodies.

STRENGTHEN THE MEANS OF IMPLEMENTATION AND REVITALIZE THE GLOBAL PARTNERSHIP FOR SUSTAINABLE DEVELOPMENT

IMPACT EXAMPLE

On October 13, AltSU held a strategic session on export development in Altai Krai. The organizer of the event was the Ministry of Economic Development and the Ministry of Industry and Energy of the region, which determined the main purpose of the session – to discuss approaches and proposals for the development of the program of Altai Krai for the export market development in the region.

INSTITUTION EXAMPLE

At the AltSU, a discussion platform "Dialogue of Equals" was organized, where Head of the Ministry of Sports of the Russian Federation mainly answered questions of young people regarding both the development of certain sports and the support of certain projects by the Ministry. "Dialogue of Equals" was organized in a question - answer format, where the topics of sports volunteering, the role of sports in the higher education system, the development of student sports clubs and the creation of a legislative framework to consolidate the role of sports in the education system were discussed.



ENGAGEMENT EXAMPLE

Rector of Altai State University Sergey Bocharov had a working meeting with Minister of Social Protection of Altai Krai Natalia Oskina. During the meeting, its participants discussed joint plans and further cooperation of the university and the Ministry of Social Protection of Altai Krai. Sergei Bocharov said that it is planned to create a humanitarian institute in the regional capital, which will conduct educational activities on the basis of AltSU and train highly qualified specialists, including for the social protection industry. The participants in the business meeting discussed joint work and further mutually beneficial cooperation within the framework of the national project "Demography" in Altai Krai and an independent assessment of the quality of social service institutions.



ALTAI
STATE
UNIVERSITY



w: www.asu.ru/en/



@altaistateuniversity